

Runnymede Colliers Wood, SW19 2PG

£350,000 Leasehold



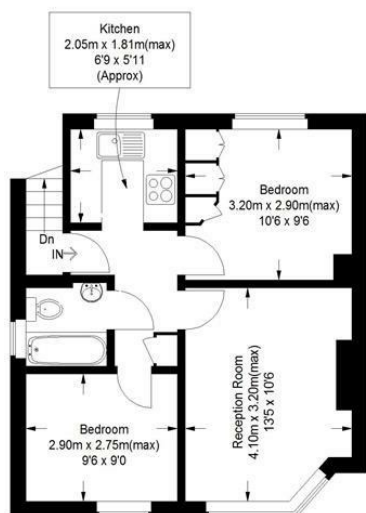
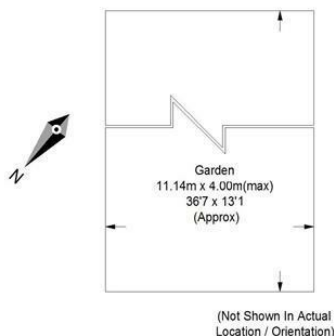
An immaculate two double bedroom first floor maisonette with private landscaped rear garden located in a desirable location close to Colliers Wood tube station. Spacious reception. Modern fitted kitchen. Bathroom with white suite. Summer house in garden. Sold with no onward chain and with a new 99 year lease.



25 years and still winning awards

Runnymede, SW19

Approximate Gross Internal Area
41.5 sq m / 447 sq ft



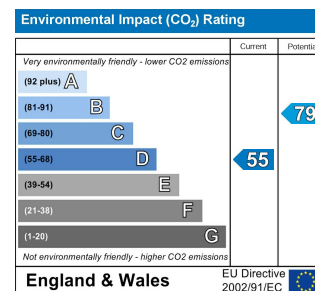
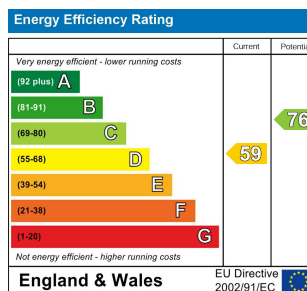
First Floor

This floor plan is for representation purposes only and is not drawn to scale. Whilst every attempt has been made to ensure of the accuracy of the plan measurements of doors, windows and rooms are approximate only and should be checked before making any decisions reliant upon them.

Copyright Bespokeplans.co.uk 2016
(ID282999)



- No Onward Chain
- Long Lease
- Own Front Door
- Private Garden
- Close to Transport Links
- EPC Rating D



For Free Mortgage Quote and Best Mortgage Rates, call an Ellisons Mortgage Advisor on 020 8944 9494

Although these particulars are believed to be correct, their accuracy is not guaranteed and they do not form part of any contract.

Ellisons Estate Agents Limited

Registered Office: 4th Floor, Tuition House, St. George's Road, Wimbledon, London SW19 4EU. Registered in England & Wales, company number 7533420